

PowerCom for Reply Worldwide Group Response Software

The Simple, cost-effective and the most elegant solution for your ARS (Audience Response System) or GRS (Group Response System)



- PowerCom for Reply Worldwide the single digit ARS works with 5 keypad models Reply WW, Mini, Standard Reply, EZ, EU. You can combine any of the 5 models in a meeting.*

- Reply Systems are the world's most popular single digit RF ARS keypad systems (up to 10 answer choices).

- Reply Mini is currently the hottest new keypad model, ultra slim size (smaller than credit card) and comes at an attractive price of \$39.95 each. However you can ONLY vote up to 5 answer choices.

- WW & Mini share same base stations (2 models: CRS940 and the new CRS941, a USB stick size) with the same price of \$395.00 each. Each base communicates with up to 250 keypads. WW & Mini are 2.4 GHz RF wireless keypads and are license-free bands.

- If you own older keypad models (Standard Reply, EZ, EU) you can purchase PowerCom for Reply Worldwide to use these 3 models, when you upgrade your keypad, your software investment will be protected.

Be up and running your own ARS in three simple steps.



1. PowerCom for Reply Worldwide is a Microsoft PowerPoint add-in. Install the software to capture audience responses for your presentations.

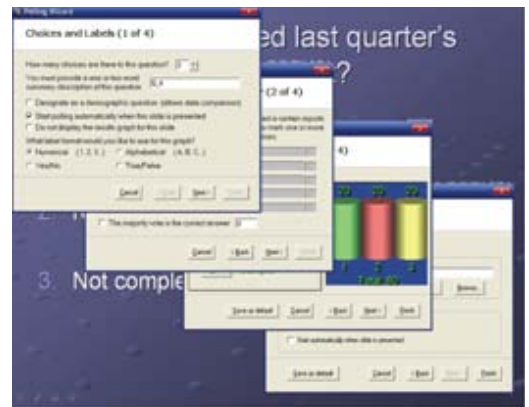
2. Use a Projector and a Base Station that connects to your computer that runs PowerPoint and PowerCom.

3. Hand keypads to the audience and you are ready to start your meeting.

In four simple steps, PowerCom Reply Worldwide simplifies your ARS tasks of getting, reviewing and reporting user responses to a PowerPoint presentation.

1. Design question slides in PowerPoint for a variety of situations where user input is required such as choices, answers, etc. and demographic question such as Race, Religion, Gender etc.

2. Run the presentation and the audience votes using the keypad when a poller slide is shown.



3. Display the responses instantly after a vote is cast, reserve the results to the end after the entire presentation is complete or keep it to yourself.

4. Generate a variety of reports such as Excel, Word, PowerPoint files or port the results to different applications.

Where can PowerCom Reply Worldwide be used

PowerCom for Reply Worldwide's ARS functions can be employed in diverse areas such as Education and Training, Marketing Research, Focus Groups, Sales Meetings, Delegate Meetings, CME and Medical Symposiums, Departmental Meetings, Trade Shows and Seminars / Keynote Speaking Engagements to name a few.

Features of PowerCom's Worldwide add-in for PowerPoint

1. Create regular poller slides and Demographic poller slides in PowerPoint by setting custom labels, choices, graph types, answers and polling music.

2. Run the presentation and provide users with a variety of polling functions to help them to advance a slide, answer choices etc. Reply Worldwide also lets you add impromptu questions without exiting the presentation or redesigning slides.

3. Meeting session management to resume an interrupted presentation and color coded base station connection status to give user a visual clue.

4. After a presentation is complete view the Demographic results in the graphical option you have set while designing the demographic slide.



* - Standard Reply, EZ, and EU are discontinued models.

PowerCom for Reply Worldwide Group Response Software

5. Wide variety of options to view results from simple Basic Polling data view to sophisticated OLAP analysis. You can also generate the results in Microsoft's office documents such as Excel, Word and PowerPoint.

6. For non-anonymous polling, especially for the classroom ARS, control of the participants in an audience can be done by maintaining a Roster file. Using this feature you can create teams, particularly useful for Quizzes and analyze results by these teams. You can even track individual and team cumulative scores and in Quiz Competitions find out which participant had the fastest finger to answer a question.

7. PowerCom Reply Worldwide even comes with a Demo mode that allows you to simulate an actual polling presentation before you can go Live and without keypads.

8. Allow you to combine data files obtained as results from two or more presentations.

9. Fully compatible with PowerPoint important features such as dual monitor with presenter's view, custom animation, and use of presenter remote device.

5. Weak Battery warning

6. Vote indication via 3 segment vertical bar.

The Reply Mini has the following features:

1. 2.4 GHz RF connectivity.

2. Green and Red LED instead of 7 segment display.

3. Maximum answer choices 5.

4. Less than 1 oz and is smaller than a credit card in size.

5. Has most of the functionality of the standard model.

6. Costs \$69.95 for the WW and \$39.95 for the Mini.



Support

PowerCom for Reply Worldwide comes with unparalleled support. We are sure that if you have a problem or question with or about the Reply Worldwide it will be answered to your satisfactions using any one of our support systems described below.

Web site Online Chat Support

PowerCom provides 24/7/365 support via chat on its website at www.powercomars.com for all its products including Reply Worldwide. Talk to a customer support personnel today.

Comprehensive online help

PowerCom comes with an exhaustive online help that can be referred to as often as possible. PowerCom ensures that the manual and documents are updated and up to date. Visit <http://www.powercomars.com/documents/documents.html> for more information.

Tutorial

Complete tutorials on getting started on PowerCom for Reply Worldwide is just a website away where you can also find a Quick Start tutorial to get you up and running in minutes. For tutorials on Reply Worldwide visit <http://www.powercomars.com/tutorial/tutorial-for-powercom-reply-Worldwide.html>.

FAQ

Check <http://www.powercomars.com/support/faqs.html> for frequently asked questions on PowerCom for Reply Worldwide. If the FAQ did not answer your questions check the Forum.

Forum

Check to see what other users of Reply Worldwide are discussing about their experiences and solutions at <http://forum.powercomars.com/forums>. From here you can also access a variety of other support files such as Templates, Manuals and Drivers.

Hardware

Base Station

The communication device is one that connects your computer to the keypads used by the audience. Up to 15 channels can be used for polling in a meeting.



Other features of the Base station are:

1. 2.4 GHz RF Transceiver that easily connects to your computer via a USB port.

2. Can handle 250 keypads per base station.

3. 15 channels for keypad connectivity. This can also be made into 30 by special order to accommodate more keypads.

4. Can increase the capacity of your presentation by operating multiple base stations using more ports.

The Keypad

PowerCom Reply Worldwide supports single digit keypads. Up to 3750 keypads can be supported but the hardware can be custom built to support up to 18,000 keypads by special order. Currently two popular models are available, the Reply Worldwide and the Reply Mini.

The Keypad CRS5200 has the following features

1. 2.4 GHz RF connectivity. Channel setting and keypad

2. 7 segment LED display.

3. 15 keys (10 numeric (1-10) and alphabets (A-E)), 3 softkeys, * and Clear

4. Maximum answer choices 10.

Fleetwood Group, Inc.

P.O. Box 1259
Holland, Michigan 49422-1259
Phone: (800) 257-6390 Fax: (616) 820-8301
<http://www.replysystems.com> sales@fleetwoodgroup.com

Dynamic Services International, Inc.

57 West 38 Street 12 Floor New York, NY 10018
Phone: 1-212-997-2000 Fax: 1-212-997-4297
<http://www.PowerComARS.com> powercom@d sii.net