

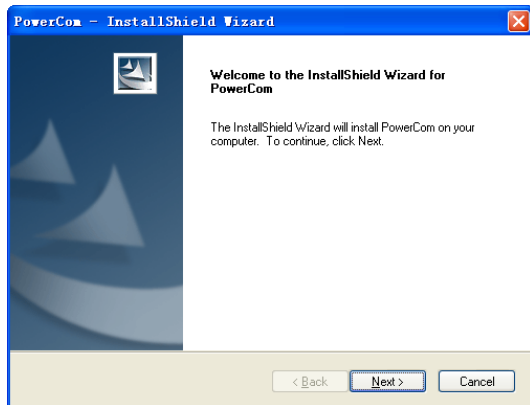
PowerCom Reply Worldwide/Mini Office 2003 quick setup guide without hardware equipment in demo mode

Prerequisite: OS: Windows 2000, XP, Vista (32 bit), windows 7 (32 bit); Office 2000 to Office 2003 and IE 6 and above.

1. Download PowerCom from

<http://www.powercomars.com/powercom/powerpoint-presentation-software-download.html>

2. Download and unzip the file, run setup.exe, follow the installation procedure to install PIA, Dot net frame work (if your computer does not have that):



Next



Select PowerCom for Reply Worldwide.

3. Open the sample.ppt from Start, All Programs, PowerCom, Worldwide" Sample File.ppt"

4. PowerCom installation creates a new Tab called "PowerCom". In PowerPoint Design mode, you use the Office 2003 dropdown menu to create question slide "Poller", manage polling, receive votes from audience's keypads and display voting result after polling stops. (You can skip this step by using the sample PPT file)

5. Run slide show (F5) and the "PowerCom confirmation popup screen" indicates that Demo mode will be used since there is not base station connected to the computer. Click OK to continue.

6. Use SpaceBar to display slide by slide till you reach the question slide. PowerCom will simulate 250 keypads voting from 1 to 250 votes. Press Spacebar again to stop then spacebar again to display the polling result. You can see all available next action items by right mouse click the Poller box (at bottom right corner).

Note: Detail quick setup guide for testing with hardware equipment:

<http://www.powercomars.com/publish/pdf/reply-worldwide-mini-keypad-quick-setup-guide.pdf>